



SGS MUSCOWPETUNG

ABORIGINAL CONSTRUCTION MONITORING

WEEKLY REPORT

SPREAD 3

OCTOBER 15TH TO OCTOBER 21ST, 2018

Social and Cultural Features

Field Observation	# of occurrences	Description and Mitigation Measures	Mitigation Status	Further Action Required (Yes/No)
Traditional Use Area (hunting, fishing, gathering, trapping)	0			
Rock Formations (rocks of significance, tipi rings, etc.)	0			
Artifacts	0			
Bones	0			
Potential Gravesites	0			

Environmental Features

Field Observation	# of occurrences	Description and Mitigation Measures	Mitigation Status	Further Action Required (Yes/No)
Medicinal or Cultural Plants	0			
Aquatic Life	0			
Animal Observations or Burrows	0			
Bird Nests	0			
Trees (Red Willow)	0			
Wetlands	0			
Watercourse Crossing	0			

Additional Observations and Summary of Activities or Concerns

The native pastures are completed, and the access approaches are cleaned up within the native pastures. They began seeding in the native pastures with the seed mixture containing 40% Northern Wheatgrass, 30% Western Wheatgrass, 15% June grass, 10% Blue Grama, and 5% Western porcupine Grass which is currently on going in the Elbow community pasture.

Valve site number 13 is completed along with the access approach top soil being levelled out and all cleaned up. Valve number 7 has also been completed. They are currently working on valve eight (8) access approach.

The process of spreading straw and crimping started this week. Also, the Hydroseeding started where it was identified to have ended at the end of the spread three (3). Hydroseeding will be started this week where it has been identified as well. This is all currently ongoing.

The west side of the river is all cleaned up including the top soil. Here valve number 10 is located and currently they are working on the access road which is a process of stripping the top soil, levelling out the access road, compacting it, laying out Geotech and geogrid and putting pit run gravel over that. They then compact it and perform a compaction test. After this process, they put more pit run and repeat this process until they reach the required elevation of the access road. They also installed culverts where they were needed.



Preparing area for Culvert Road 32



Compacting access approach Road 63



Cleaning and bleaching equipment

Wash bay





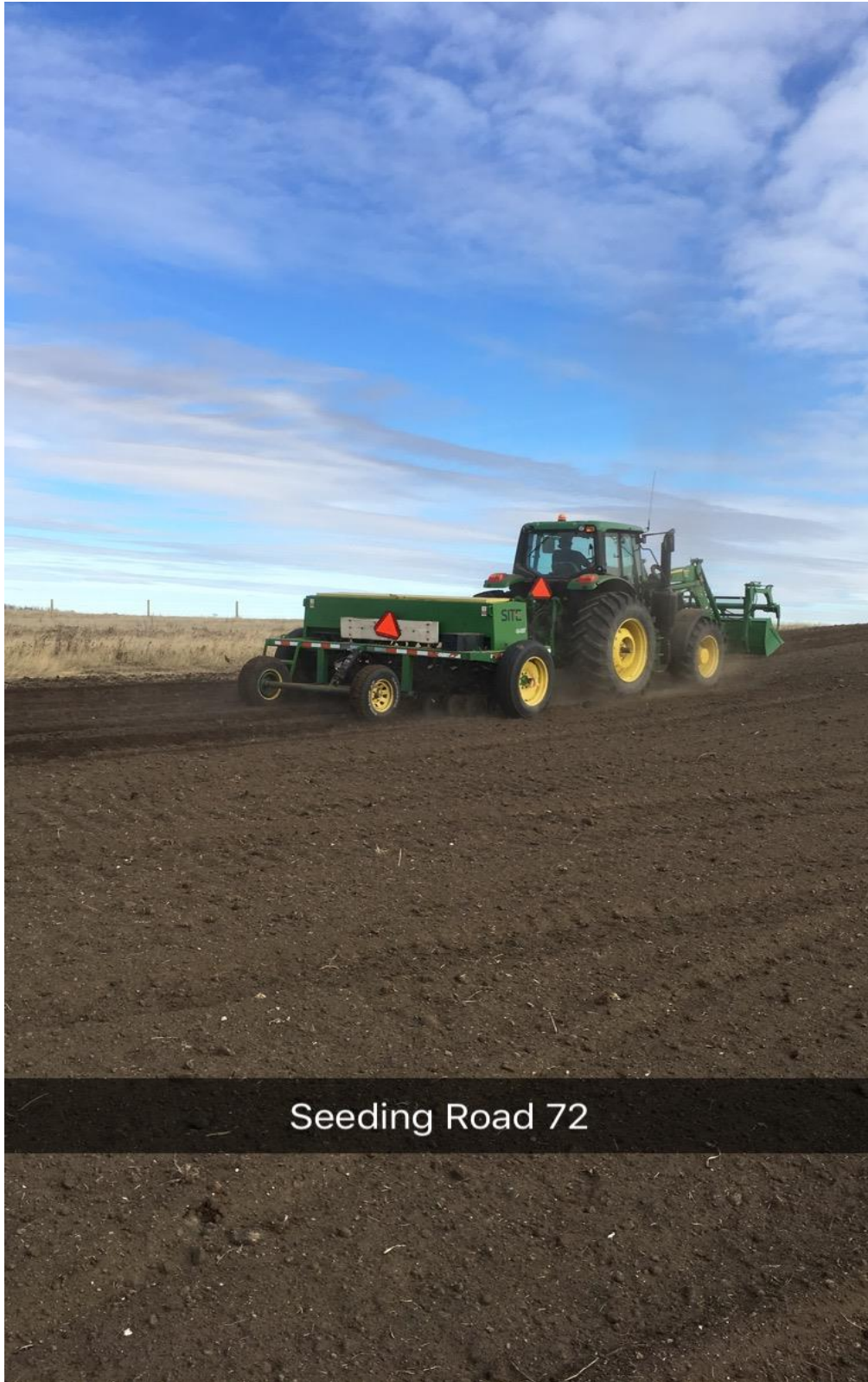
Spreading pit run. Road 19



Shaving access Road 19



Seeding Road 65



Seeding Road 72



Compacting Road 32



Installing straw wattles Road 37



Compaction test Road 42

Approvals

Prepared by



Gary Gopher
Senior Construction Monitor

October 20, 2018

Reviewed by



Joseph Roach
Project Manager

October 23, 2018

Approved by



Emmanuel Olotu, P.Eng.
Technical Manager, Geotechnical

October 23, 2018

This document is issued by the Company under its General Conditions of Service available on request and accessible at http://www.sgs.com/terms_and_conditions.htm. Attention is drawn to the limitation of liability, indemnification and jurisdiction issues defined therein. Any other holder of this document is advised that information contained hereon reflects the Company's findings at the time of its intervention only and within the limits of Client's instructions, if any. The Company's sole responsibility is to its Client and this document does not exonerate parties to a transaction from exercising all their rights and obligations under the transaction documents. Any unauthorized alteration, forgery or falsification of the content of appearance of this document is unlawful and offenders may be prosecuted to the fullest extent of the law.